



2 Austen Drive

Bramley, Rotherham, S66 2UF

£1,150 Per Calendar Month

A stunning three-bedroom semi-detached property that has been beautifully extended and thoughtfully designed to offer the perfect blend of style, space and comfort. Newly redecorated, the property comes with off street parking, garage and utility room.

AVAILABLE JANUARY 2026

COUNCIL TAX BAND B

- Extended three bedroom semi-detached
- perfect for couples and families
- Corner plot
- Enclosed rear garden with artificial grass
- Spacious lounge and modern kitchen
- porch and utility room
- Garage and driveway for multiple cars
- Excellent location
- COUNCIL TAX BAND B
- AVAILABLE JANUARY 2026

Viewing

Please contact our ELR Europa Link Office on 01142689900 if you wish to arrange a viewing appointment for this property or require further information.



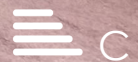
3



1

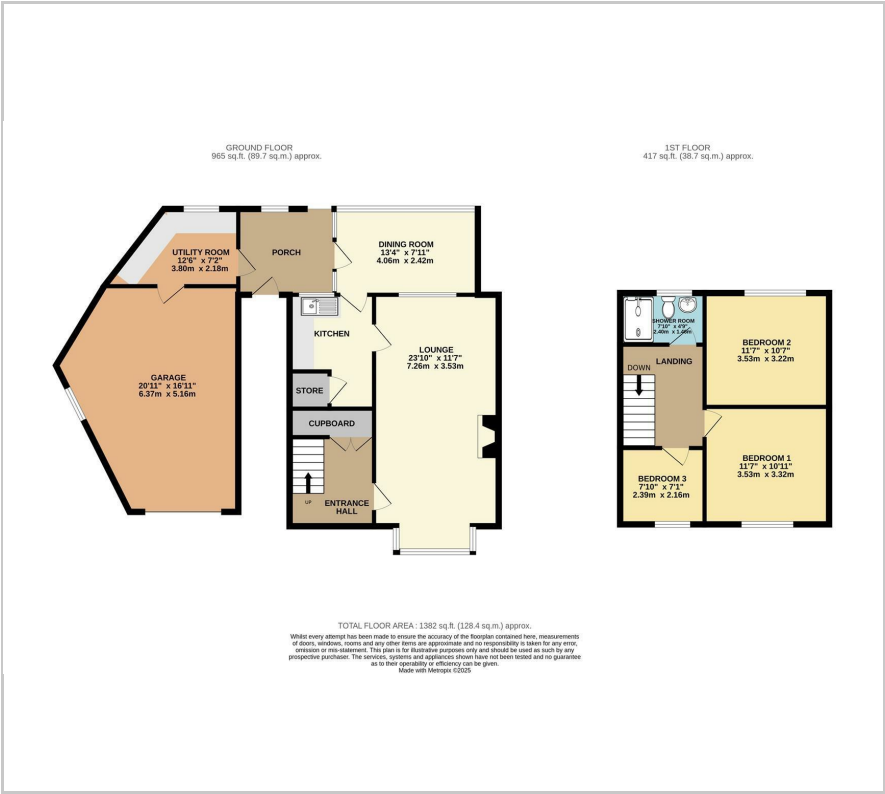


2



C

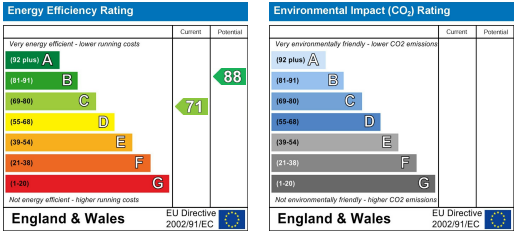
Floor Plan



Area Map



Energy Efficiency Graph



These particulars, whilst believed to be accurate are set out as a general outline only for guidance and do not constitute any part of an offer or contract. Intending purchasers should not rely on them as statements of representation of fact, but must satisfy themselves by inspection or otherwise as to their accuracy. No person in this firms employment has the authority to make or give any representation or warranty in respect of the property.